



THE HAYLOFT

BAR AND GRILL

STARTERS AND SMALL PLATES

Chilli Beef

£7.50

Strips of Steak with fried peppers, onions & sweet chill

Mackerel & Horseradish Pate

£7.50

Farmhouse recipe mackerel pate, served with pickled cucumber & crispbreads
(GF on request)

Crispy Whitebait

Whitebait with lime & paprika, served with garlic aioli
(GF on request)

£7.00

Chef's Soup

£6.50

Chef's homemade soup recipes, served with sourdough for dipping
(Vgn & V on request)

THE MAIN EVENT

Family Service Sunday Lunch

Sunday Roast

£17.95

Select one meat or vegetarian option per person

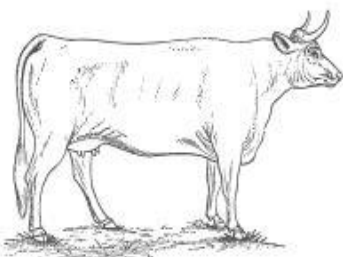
Beef Brisket

Pork Belly

Roast Chicken

Mushroom Pithivier (V & Vgn)

Served with a homemade Yorkshire pudding, the perfect roast potatoes and seasonal vegetables



CLASSICS

Farmhouse Mac and Cheese	£15.95
Macaroni cooked in a rich cheddar cheese sauce with a herb crumb, served with a side of garlic ciabatta. (V)	
Cod and Chips	£14.95
Cod fillet coated with Norfolk beer batter, served with malt vinegar, mushy peas, chips & tartar sauce (GF on request)	
Mushroom Burger & Chips	£15.95
Farmers Portobello mushroom with goats cheese, onion chutney, tomato, baby gem lettuce, in a brioche bun served with chips. (V)	
Chef's Gourmet Pie	£16.95
Chef's handmade local pie, served with buttered mash, farmhouse vegetables & thick gravy	
- Brisket and Ale	
- Local Game	

AFTERS

Farmers Apple & Berry Crumble	£7.50	
Brown sugar oat crumbles with farmer's apples & berries, Served with custard or ice cream.		
Classic Sticky Toffee Pudding	£7.50	
Chef's sticky toffee served with salted caramel sauce & vanilla bean Ice cream		
Chocolate Truffle Bar	£7.50	
Dark chocolate ganache with a chocolate crumb, served with Chantilly cream		
Blood Orange Panna Cotta	£7.50	
Panacotta made with fresh blood orange, served with ginger shortbread		
Treacle & Walnut Tart	£7.50	
Old fashioned treacle tart with walnuts, served with proper custard or vanilla bean ice cream		
Ice cream	£1.50	
Selection of ice creams & sorbets. Ask for flavours		per scoop